

RABUN GEAR



RABUN GAP

UPGRADE MEETS CABIN IN THE WOODS

A timely thriller that lives
at the intersection of
Technology and Tradition

A HORROR TECHNO-THRILLER HYBRID

Rabun Gap takes the time honored
small town, cabin-in-the-woods
horror setting and unleashes
a healthy dose of modern tech
into the unsuspecting environment

TARGET AUDIENCE

The story features a number of
elements familiar to fans of horror,
science fiction, and thrillers,
weaving them together in a seamless
manner designed to reach across
genres for the widest audience reach.

RABUN GAP

LOGLINE

Welcome to the Gap.

A research team investigating problems with rural cell towers are forced to rely on their instincts in order to survive a terrifying threat of unknown origin.

RABUN GAP

WELCOME TO THE GAP

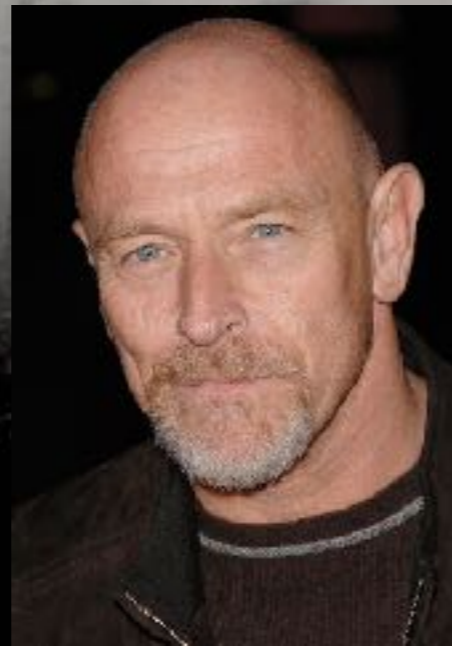
A glimpse into the sights and locales of the North Georgia Mountains and Rabun County



RABUN GAP

THE CHARACTERS

Meet the Researchers from Atlanta...



...and the Citizens of Rabun Gap

CATHERINE TABER



Actress **Catherine Taber** has appeared in film, television, and video games but is perhaps best known for her numerous roles in that Galaxy far, far away. Catherine has portrayed Padme Amidala for the last decade, most recently in the return of the critically acclaimed series **Star Wars: The Clone Wars**.

Catherine around the web:

[IMDB](#) [TWITTER](#) [INSTAGRAM](#) [WEBSITE](#)

CHRIS ETHRIDGE



Chris Ethridge has directed two feature films and written and directed over a dozen short films and music videos, including an award-winning, authorized adaptation of Stephen King's short story "**Survivor Type**".

Chris around the web:

[IMDB](#) [WEBSITE](#) [FACEBOOK](#) [INSTAGRAM](#)



Festival winning HAVEN'S END directed by Chris Ethridge & starring Catherine Taber is being released by Mill Creek this September.

RABUN GAP

THE NUMBERS

Rabun Gap has been written with a mindful eye towards balancing the complexities of modern film production with the quality demands of the discerning horror/thriller audience.

The screenplay as written provides for a wide range of casting options for established actors as well as up-and-coming younger stars. The VFX requirements are appreciable, but modest rewrites can support a significantly lower budget if needed.

The film is set in the North Georgia Mountains, with the intention of utilizing experienced Georgia crews and allowing the production to take advantage of the generous available Georgia Film Tax Credits.

RABUN GAP

status: 117 page script available upon request

locations: North Georgia Mountains, Greater Atlanta Area

contact: Chris Ethridge - ethridge@bluedusk.com